



# Supporting Students Experiencing Homelessness Through A Community School Approach

Friday, April 28, 2023

10:15 am – 11:30 am

Pacific E



# WELCOME AND INTRODUCTIONS

**Alejandra Chamberlain**  
Director, Youth Services  
Contra Costa County Office of Education



**Martine Blake**  
Director, Community Engagement  
West Contra Costa Unified School District



*Riding the Waves Together*

# WELCOME AND INTRODUCTIONS

## Mark Yost

Director, Foster & Homeless Youth Services  
San Joaquin County Office of Education



## Regina Helmer

Coordinator/Liaison, McKinney-Vento  
Amador County Office of Education



*Riding the Waves Together*

# OVERVIEW

- HETAC
- Community Schools
- HETAC Community School Mini Grants
- LEAs
  - Process
  - Implementation



*Riding the Waves Together*

# ABOUT THE HETAC

- The Homeless Education Technical Assistance Center (HETAC)
  - Is funded by the California Department of Education to serve as the state's homeless education technical assistance center
  - Is operated jointly by the Contra Costa, Los Angeles, and San Diego County Offices of Education
- Learn more at [hetac.org](https://hetac.org)

## HETAC Lead Contacts

Contra Costa County Office of  
Education  
Alejandra Chamberlain  
[achamberlain@cccoe.k12.ca.us](mailto:achamberlain@cccoe.k12.ca.us)

Los Angeles County Office of  
Education  
Jennifer Kottke  
[kottke\\_jennifer@lacoed.edu](mailto:kottke_jennifer@lacoed.edu)

San Diego County Office of  
Education  
Susanne Terry  
[susanne.terry@sdcoe.net](mailto:susanne.terry@sdcoe.net)



Riding the Waves Together



# HOMELESS EDUCATION TECHNICAL ASSISTANCE CENTER



## About the HETAC

The HETAC is funded by the California Department of Education to serve as the state's homeless education technical assistance center. The HETAC is operated jointly by the Contra Costa, Los Angeles, and San Diego County Offices of Education.



### Contra Costa County Office of Education

**Alejandra Chamberlain**, HETAC Lead, [achamberlain@cccoe.k12.ca.us](mailto:achamberlain@cccoe.k12.ca.us)

Serving Alameda, Alpine, Amador, Calaveras, Colusa, Contra Costa, El Dorado, Lake, Marin, Mendocino, Napa, Nevada, Placer, Sacramento, San Francisco, San Joaquin, San Mateo, Santa Clara, Sierra, Solano, Sonoma, Sutter, Tuolumne, Yolo, and Yuba counties



Los Angeles County  
Office of Education

### Los Angeles County Office of Education

**Jennifer Kottke**, HETAC Lead, [kottke\\_jennifer@lacoed.edu](mailto:kottke_jennifer@lacoed.edu)

Serving Butte, Del Norte, Glenn, Humboldt, Kern, Lassen, Los Angeles, Modoc, Plumas, San Luis Obispo, Santa Barbara, Shasta, Siskiyou, Tehama, Trinity, and Ventura counties



### San Diego County Office of Education

**Susanne Terry**, HETAC Lead, [susanne.terry@sdcoe.net](mailto:susanne.terry@sdcoe.net)

Serving Fresno, Imperial, Inyo, Kings, Madera, Mariposa, Merced, Mono, Monterey, Orange, Riverside, San Benito, San Bernardino, San Diego, Santa Cruz, Stanislaus, and Tulare counties

**hetac.org**





# CSLX

COMMUNITY SCHOOLS  
LEARNING EXCHANGE

*All schools, community schools*

*Content for slides 8-18 from CSLX Community Schools Basics presentation, March 22, 2023, with permission.*



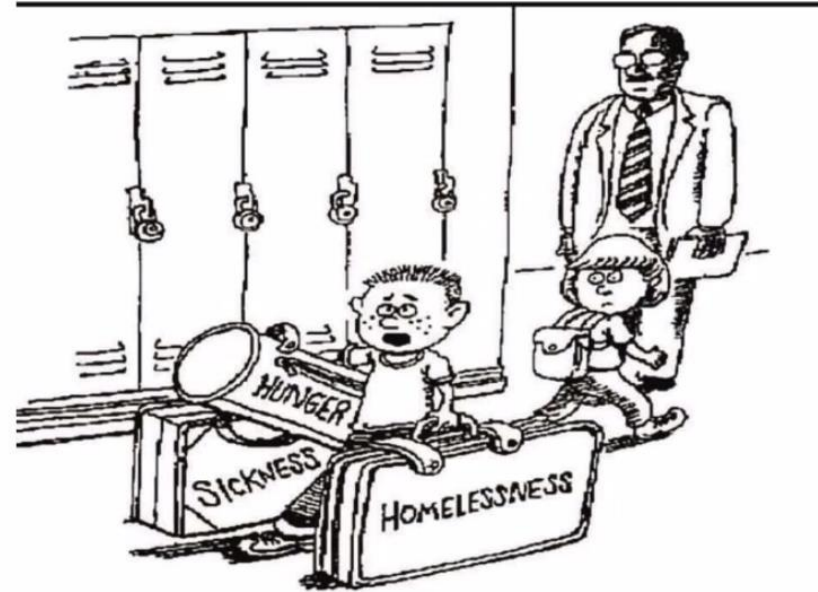
# Community School Basics

- Grounding Definition: What \*IS\* a community school?
- CA Community School Partnership Program (CCSPP)
- Enabling Conditions for Success
- Roles – COEs, Districts and School Sites





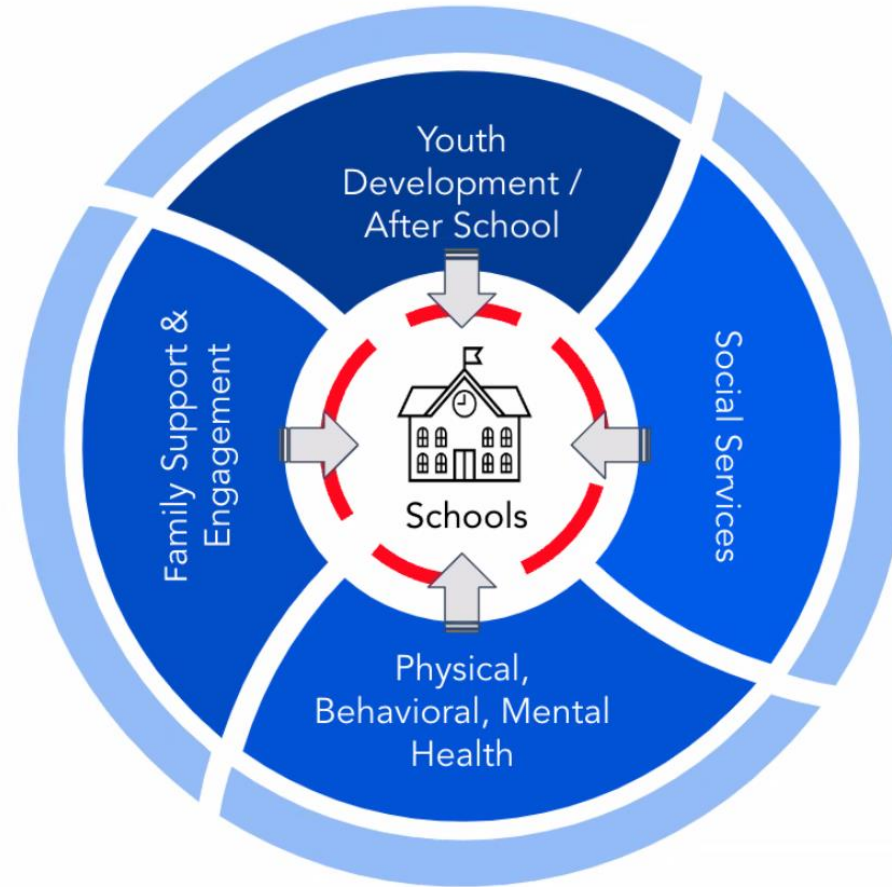
# What is a community school?



*"Could someone help me with these?  
I'm late for math class."*

Scott

# What is a community school?



*Riding the Waves Together*

# A Shared Definition:

**A community school strategy** transforms a school into a place where educators, local community members, families, and students work together to strengthen conditions for student learning and healthy development.

As partners, they organize in-and-out of school resources, supports, and opportunities so that young people thrive.

*Community Schools Forward, 2023*



# Community Schools

## A Strategy, NOT a Program

“A strategy for organizing the **resources** [and **voices**] of the school and community around student success...”

-Pat Harvey, Former Superintendent  
St. Paul Public Schools



# A Whole Child Approach to Learning

A whole child, whole-community approach to learning, with students and families at the heart, surrounded by caring adults, supported by compassionate systems.

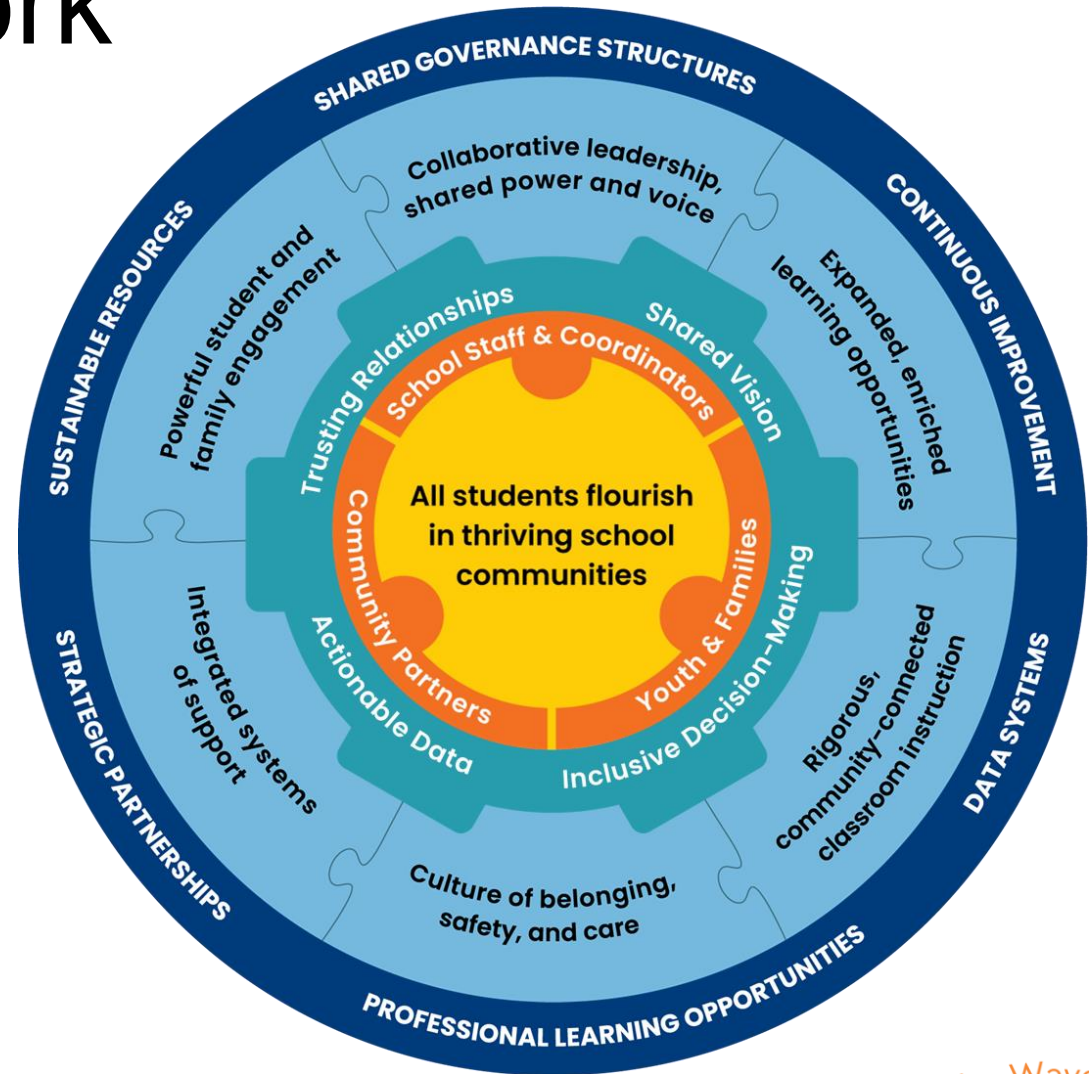


*Riding the Waves Together*

# A Shared Framework

**LEGEND**

- Why we do this work
- Who drives this work
- Enabling conditions
- Key practices
- Supportive infrastructure



*Riding the Waves Together*

# Community Schools Trends over 20+ years



Then

.....and now

|                                 |  |
|---------------------------------|--|
| Co-location                     | Collective impact  |
| Adding programs and services    | Whole school transformation                              |
| “Removing barriers” to learning | Teaching & learning; the science of learning/development |
| CBOs vendors                    | CBOs as partners   |



*Riding the Waves Together*

# Community Schools Trends over 20+ years



|                                |                          |
|--------------------------------|--------------------------|
| Wrap-around services           | Integrated services      |
| Program-centered               | Student-centered         |
| Time-limited project           | Long-term strategic      |
| Developing 1 or a few schools  | Developing systems of CS |
| Targeted on struggling schools | The way we do school     |



*Riding the Waves Together*



# California Community School Partnerships Program (CCSPP)

California Department of Education



*Riding the Waves Together*

# CA Community School Partnerships Program



# CA Community School Partnerships Program

- \$2.8B (FY 2021 budget) allocated '27-28
- **Planning:** \$200K for up to 2 year period
- **Implementation:** Up to \$500K annually
- \$200-500K **Coordination** allocations to COEs to support LEA implementation
- **1 lead TA center** and **~8 regional TA centers**



*Riding the Waves Together*

# CA Community Schools Partnership Program Framework

## 4 Pillars

1. Expanded learning time and opportunities
2. Integrated student supports
3. Collaborative leadership and practices
4. Active family and community engagement



## 4 Key Conditions of Learning

1. Supportive environmental conditions that foster strong relationships and community
2. Productive instructional strategies that support motivation, competence, and self-directed learning
3. Social and emotional learning (SEL) that fosters skills, habits, and mindsets that enable academic progress, efficacy, and productive behavior
4. System of supports that enable healthy development, respond to student needs, and address learning barriers

## 4 Cornerstone Commitments

1. A commitment to assets-driven and strength-based practice
2. A commitment to racially just and restorative school climates
3. A commitment to powerful, culturally proficient and relevant instruction
4. A commitment to shared decision making and participatory practices

## 4 Proven Practices

1. Community Asset Mapping and Gap Analysis
2. A Community School Coordinator
3. Site-Based and LEA-Based Advisory Councils
4. Integrating and Aligning with Other Relevant Programs



Riding the Waves Together

# Enabling Conditions for Success

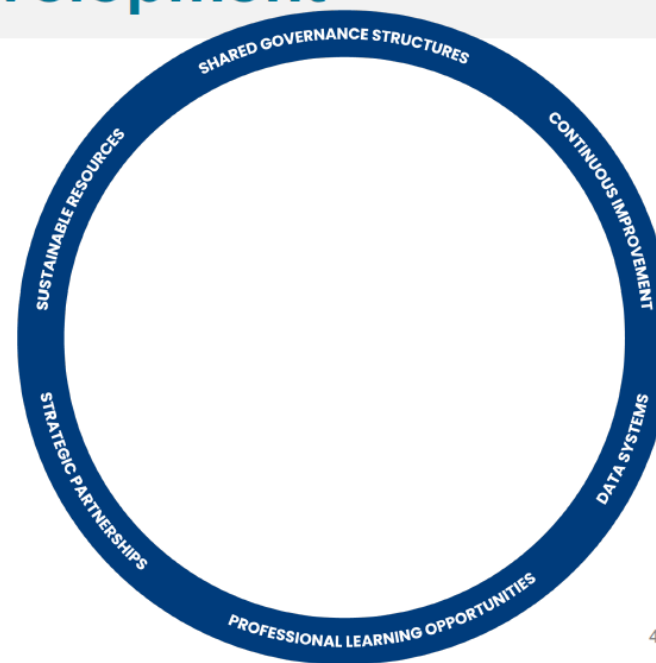
- **Trusting relationships** that strengthen partnership and collaboration
- **Dedicated investment in comprehensive coordination** and coherence
- **Inclusive leadership**/shared decision-making
- **Data-informed decision-making** & improvement/accountability
- **\*\*Capacity to Implement:** skills and resources to support a learning organization



# Roles – COEs, Districts and School Sites

## District Role in CS Development

- Shared governance structures
- Strategic Partnerships
- Professional Learning Opportunities
- Data Systems
- Continuous Improvement
- Sustainable Resources



45

# Roles – COEs, Districts and School Sites

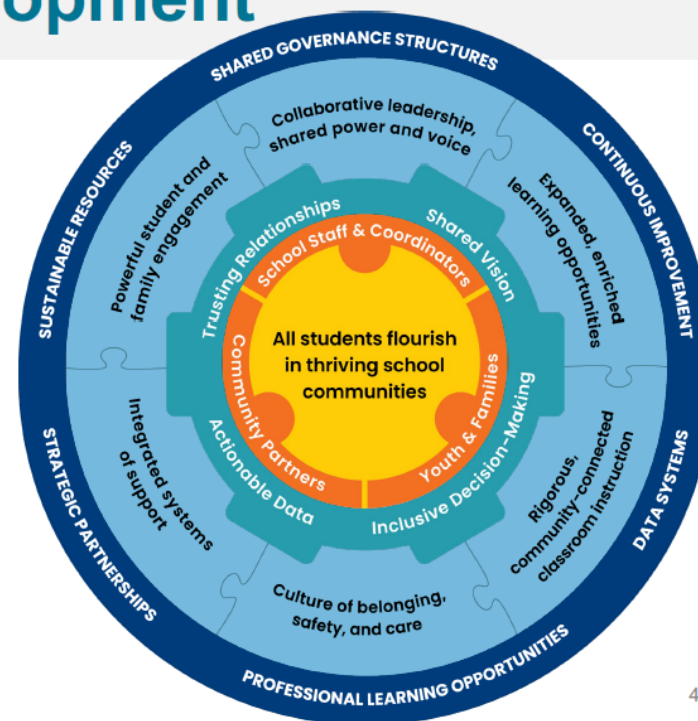
## COE Role in CS Development

Facilitate **Communities of Practice** to support districts in building:

- Shared governance structures
- Strategic Partnerships
- Professional Learning Opportunities
- Data Systems
- Continuous Improvement
- Sustainable Resources

Manage and support **Integrated Systems of Support**

- Understand and track needs and assets – identify service gaps
- Engage in county-level/cross-sector resource identification and partnering
- Support policy and MOU development – e.g. with County Health and Human Services (HHS) agencies



46

# Alignment with the California CSPP

## CA Community Schools Partnership Program Framework

### 4 Pillars

1. Expanded learning time and opportunities
2. Integrated student supports
3. Collaborative leadership and practices
4. Active family and community engagement



### 4 Key Conditions of Learning

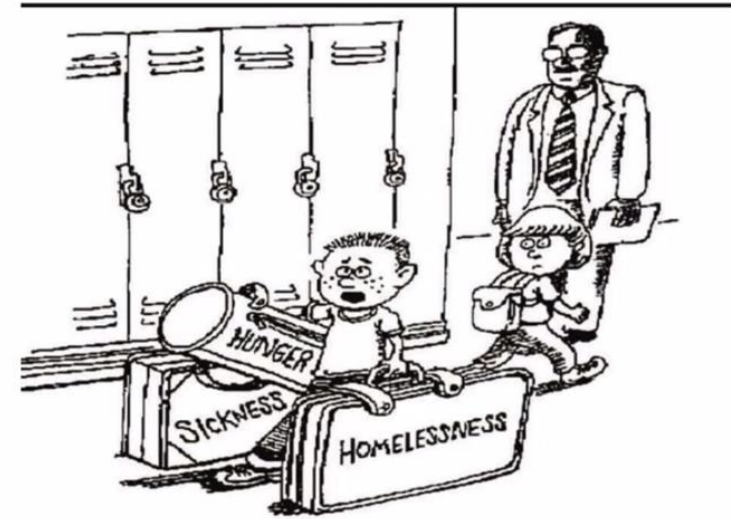
1. Supportive environmental conditions that foster strong relationships and community
2. Productive instructional strategies that support motivation, competence, and self-directed learning
3. Social and emotional learning (SEL) that fosters skills, habits, and mindsets that enable academic progress, efficacy, and productive behavior
4. System of supports that enable healthy development, respond to student needs, and address learning barriers

### 4 Cornerstone Commitments

1. A commitment to assets-driven and strength-based practice
2. A commitment to racially just and restorative school climates
3. A commitment to powerful, culturally proficient and relevant instruction
4. A commitment to shared decision making and participatory practices

### 4 Proven Practices

1. Community Asset Mapping and Gap Analysis
2. A Community School Coordinator
3. Site-Based and LEA-Based Advisory Councils
4. Integrating and Aligning with Other Relevant Programs



***"Could someone help me with these?  
I'm late for math class."***

Scott



*Riding the Waves Together*



Go to [www.menti.com](https://www.menti.com) and use the code 7646 8628

# What MV liaison duties do you complete that most district staff are not aware of?

 Mentimeter



*Riding the Waves Together*

# Community school strategies can be an effective approach to:

- **mitigate** the academic and social impacts of emergencies that affect local communities
- **improve** school responsiveness to student and family needs
- **organize** school and community resources to address barriers to learning



*Riding the Waves Together*

# HETAC Mini Grant Project

- Participate in a learning community
- Conduct a needs assessment to understand assets and gaps
- Identify strategies to increase access to resources and services
- Engage a network of community partners in a collaborative
- Build capacity of district and school personnel



*Riding the Waves Together*

# Participating LEAs

| LEA                 | Award Amount | CA Community Schools Partnership Grant? |
|---------------------|--------------|---|
| San Lorenzo Unified | \$150,000    | Yes, Implementation grant               |
| West Contra Costa   | \$150,000    | Yes, Implementation grant               |
| Amador COE          | \$160,000    | No                                      |
| Nevada COE          | \$130,000    | No                                      |
| San Joaquin COE     | \$160,000    | Yes, Planning grant                     |
| Yuba COE            | \$100,000    | Yes, Planning grant                     |



*Riding the Waves Together*

# Amador COE



Amador County Unified School District  
Amador County Office of Education

- Unified P-12 district serves about 4,000 students and consists of the Amador County Unified School District and the Amador County Office of Education.
- Nestled in the heart of the Gold Country in the Sierra Nevada Foothills, close to San Francisco, Sacramento, Yosemite and Lake Tahoe.
- Offers a variety of quality schools including two comprehensive high schools, one alternative high school, two junior high schools, and six elementary schools.



# Amador COE



Amador County Unified School District  
Amador County Office of Education

## Funding Supports:

- Additional staff time to increase collaboration with community partners.
- Creation of an advisory board to address homeless youth needs and services.
- Tracking services provided, types of collaboration, and case management.
- Strengthening support for high school students to graduate and prepare to transition to college and career.



# San Joaquin COE Families in Transition



San Joaquin County (SJC), San Joaquin County Office of Education  
County Operated Schools and Programs (SJCOE COSP)

- SJC- 135,000 K-12 students
  - 5000+ K-12 students in transition in SJC- 4%
- SJCOE COSP. **one. Program- 6% in Transition**
  - Total Enrollment- 2294 ( as of 4/6)
  - Students in Transition- 158 (as of 4/6)



# San Joaquin COE Families in Transition



San Joaquin County Office of Education Families In Transition (FIT) Team- 1 transition specialist assigned to COSP Court & Community school programs

- FIT Transition Specialist- provide direct/indirect services, Collaborations
- Intervention & Prevention Team
- Family Engagement Team





# West Contra Costa Unified School District



## FULL SERVICE COMMUNITY SCHOOLS



---

### Where Community supports Education and Education supports Community

West Contra Costa Unified School District provides the highest quality of education, has multiple gateways to support successful schools/communities/families, increase health/test scores/grades/graduation/college attendance, decrease expulsion/truancy/drop-out rates/achievement gap, producing children that are well-rounded, productive citizens, and ready to take on life's challenges.

West County Full Service Community Schools is an integrated, comprehensive, coordinated initiative aimed at achieving educational success, well-being and self-efficacy for students, families and communities.

# West Contra Costa Unified

## Funding supports:

- Project Manager position
- Extra time for Liaison and Counselors
- Evaluation and Reports
- Supplies/stipends for focus groups



# Panel Discussion

- How can we advance the MV community school work?
- What is the biggest challenge in the MV community school work at the moment?
- What are the most critical changes that we must make to face the future effectively?
- What is the number one way we can make a substantial difference?



# Thank You!

Alejandra, Mark,  
Martine, and Regina

